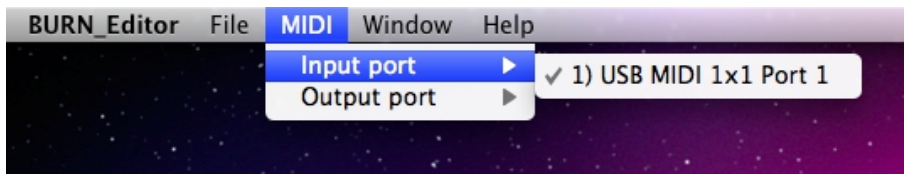


GSI BURN Editor / Librarian – Version 1.0

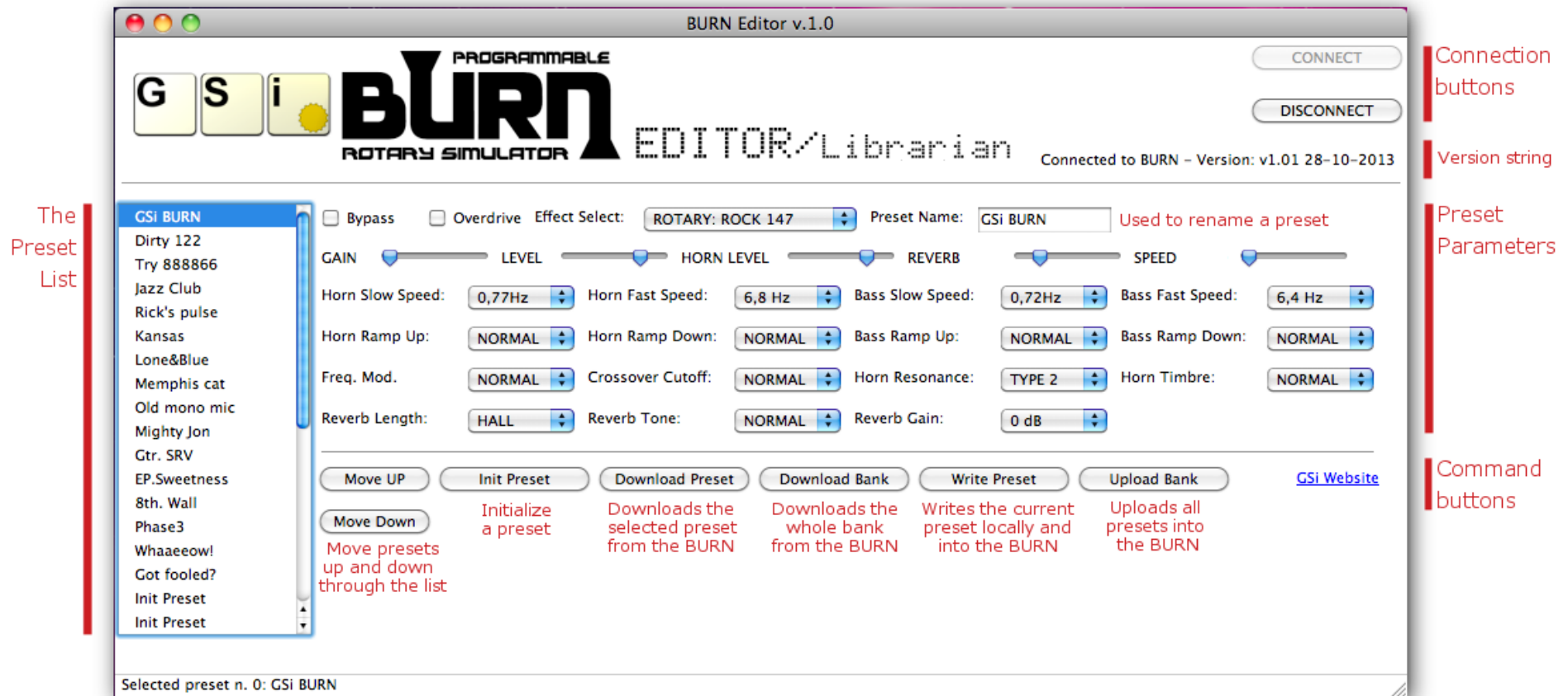
Welcome to the GSi BURN Editor, a very easy and intuitive tool that expands the possibilities of the GSi BURN making it even more integrated into your digital world. In the downloaded folder you find both the Windows and the OSX version each inside its own folder. Before double-clicking its icon, make sure you've made all necessary connections.

The BURN Editor can be used either online (i.e.: connected to the BURN) or offline (not connected). When used offline, you can import and export banks or presets, organize presets in the list, modify or rename them according to your needs. When the BURN Editor is online, every action done on the interface is automatically reflected to the BURN, as the Editor should be intended as a "Master" and the BURN is the "Slave". For this same reason, any change made on the BURN while the Editor is connected, won't be recognized by the Editor. Some operations are not automatically reflected on the BURN, for example "Write preset", "Init preset" and "Import sysex -> preset" will write the preset only locally and will then write it into the BURN only if user gives authorization.



To use the Editor in online mode, you must first of all connect the BURN. Make all connections preferably before launching the Editor, most importantly you have to connect your MIDI interface. Once everything is ready, double-click the Editor icon. The first operation to do is to select the correct MIDI IN and OUT ports. Do this from the MIDI menu.

Please note that you need the special MIDI OUT ADAPTER that connects to the REMOTE port and offer the MIDI OUTPUT. Don't use the MIDI THRU port.



Status Bar, displays useful informations.

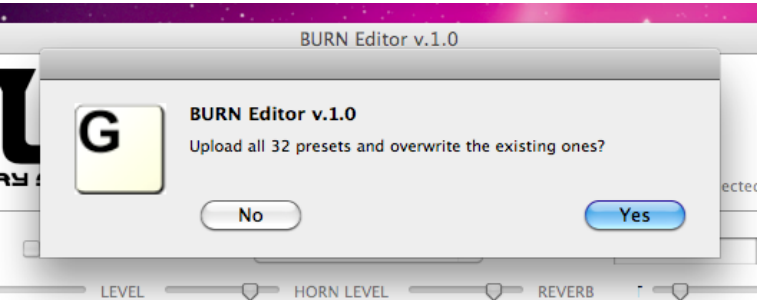
The above picture explains the layout of the editor window. On the left side you have the list that contains the presets. This list is populated either when the BURN is connected or when a preset or a bank is loaded via the menu FILE -> IMPORT SYSEX. The center section shows all editing parameters. The sliders control the REAL TIME parameters, and the labels change according to the selected effect. All NON REAL TIME parameters are displayed under the form of "combo box" drop-down lists.

The COMMAND buttons are on the bottom row. The first two "MOVE" buttons can be used to move the selected preset up or down through the list, thus making it possible to reposition a preset and organize the whole bank according to the user's needs. A preset can be renamed by typing the name into the appopriate box on the top right corner. Once the editing is completed, the preset can be saved by pressing the button "Write Preset". This will save the preset locally and will pop-up an authorization window that asks to write the preset into the BURN, if this is connected.

The button "Init Preset" has a similar function to "Write Preset", except that it resets all parameters and saves the preset into the currently selected location.

If a preset has been edited but not yet saved, can be restored by downloading it from the BURN by clicking the button "Download Preset". And if you wish to download the whole bank, use "Download Bank".

If you have modified all presets and wish to upload everything to the BURN, use "Upload bank". This last function is particularly useful if you have loaded a bank from a SysEx file and want to store it into the BURN.



Everything you do that can potentially overwrite data will require your authorization.

The FILE menu options let you import and export single presets or whole banks under the form of standard MIDI System Exclusive files with the extension .syx. When you save a file with the GSi BURN Editor you can share it with other GSi BURN owners. The files can be then imported into the BURN even without using the BURN Editor and by just connecting the MIDI IN port, since the BURN has to just receive data from an external unit.

For example, you can edit your bank, pass it along to your friend who also owns a BURN, and he can load your presets by using other 3rd party SysEx applications such as the freeware MIDI-OX (for Windows) or Snoize MIDI Librarian (for Mac).

IMPORTANT NOTES ABOUT THIS SOFTWARE

<p>System requirements:</p> <ul style="list-style-type: none">- A Windows computer with Windows XP, Windows Vista, Windows 7 or Windows 8- A Mac computer with Intel processor and OSX 10.5 or newer- A reliable MIDI interface capable of handling the MIDI System Exclusive correctly- 5 Mb of free disk space- GSi BURN FIRMWARE VERSION 1.01 or newer- The BURN MIDI OUT ADAPTER	<p>The BURN MIDI OUT ADAPTER:</p> <p>The BURN has no MIDI OUT port on its back panel, but a MIDI OUT port for communicating with the editor can be obtained thanks to the REMOTE PORT. You need to wire a simple adapter. You need a male TRS Jack and a female DIN5 cable connector that must be wired this way:</p> <ul style="list-style-type: none">- Jack tip to DIN pin n. 4 (Vcc)- Jack ring to DIN pin n. 5 (Data) preferably through a 220 Ohm resistor- Jack sleeve to DIN pin n. 2 (Ground) <p>This adapter can also be purchased from www.crumar.it</p>
--	---

GSi BURN Editor – Version 1.0
programmed by Guido Scognamiglio – 2013 All rights reserved – www.GenuineSoundware.com

DISCLAIMER: this software is FREEWARE. It's supplied "AS IS", there is no warranty and no technical support. You can use it in your commercial projects without limitations, redistribute it under any form (web, magazine...) at NO charge provided the original archive is not altered. It is fully functional under all of its aspects and no limitations of any kind are applied. The author may not be held responsible for whatever may result as a consequence of its usage. It is forbidden to alter, modify, disassemble or sell it without the explicit written authorization from the author.

The names Windows and OSX are used as a reference only and belong to their respective owners.